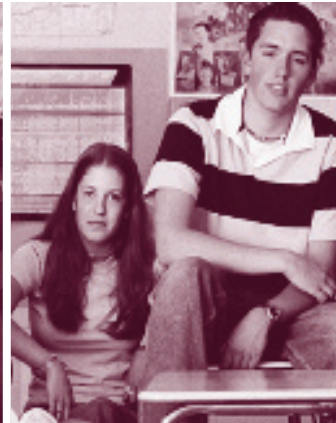


High School Content Expectations: Pre-MME Expectations



Expectations for Success with the MME

v.9.09

C E · R I G O R · R E L E V A N C E · R E L A T I O N S H I P S · R I G O R · R E L E V A
I P S · R E L A T I O N S H I P S · R I G O R · R E L E V A N C E · R E L A T I O N S
C E · R I G O R · R E L E V A N C E · R E L A T I O N S H I P S · R I G O R · R E L E V A
I P S · R E L A T I O N S H I P S · R I G O R · R E L E V A N C E · R E L A T I O N S

Expectations for Success on the Michigan Merit Exam

This document provides information about the High School Content Expectations (HSCE) that MAY be assessed on the Michigan Merit Exam (MME) beginning with the spring of 2010, as required by School Aid Act 1079, Act 94 of 1979, 388.1704b, Section 104b.

There is no required sequence for offering opportunities to earn required Michigan Merit Curriculum (MMC) high school credits in English Language Arts, Mathematics, Science, and Social Studies. Districts are free to design and offer courses in any order that allows students to meet the HSCE that define the required MMC credits.

Districts are expected to base credit assignment, at least in part, on assessments designed to indicate that students have met the expectations that define the credit (using Secondary Credit Assessments [SCA] or district common assessments).

While ALL content expectations are to be taught and tested at the classroom, building, and/or district levels, NOT ALL content expectations are assessed on the MME. The MME assesses a high percentage of Michigan's High School Standards, requiring students to demonstrate knowledge and skill aligned with content expectations designated as MME-assessable.

The content expectations listed in the chart below are those that MAY be assessed on the MME, and thus represent content knowledge and skill that should be taught before students take the MME. After reviewing the list of MME-assessable HSCE, districts may want to find ways to incorporate some expectations from credits that have been assigned to Grade 11 into earlier courses.

Beginning in the spring of 2010, the following HSCE will be eligible for inclusion on the MME. The MME-assessable HSCE are listed by core area and credit. A short description of the percentage of high school standards and the HSCE identified as MME-assessable in the four core content areas of ELA, Mathematics, Science, and Social Studies follows. Each section includes a link to a version of the formatted HSCE document, highlighted to indicate the MME-assessable HSCE for each content area.

Information regarding Michigan HSCE assessed on the ACT and WorkKeys is available at <http://www.act.org/education/statematch/>

English Language Arts – 100% of Michigan High School ELA Standards are eligible for inclusion on the MME (ACT English, Reading, Writing, or WorkKeys assessments). Within these Standards, 41 ELA HSCE have been assessed or identified by ACT and the MME as eligible for inclusion on the MME, representing 45% of the 91 ELA expectations. Items appearing on the ACT's assessments measure different content expectations every year.

[MME-Assessable ELA HSCE](#)

Mathematics – 100% of Algebra I, 100% Geometry and 67% of Algebra II HSCE are identified as MME-assessable; 26 of 39 Algebra II HSCE, (as defined in the 9/09 revision of the Algebra II Course/Credit Requirements), are MME-assessable. The MME assesses 117 of 161 (73%) Mathematics HSCE and 10 of 13 (77%) Michigan High School Mathematics Standards.

[MME-Assessable Mathematics HSCE](#)

Science – 100% of Essential Science HSCE are MME-assessable, representing HSCE from each Science discipline and approximately 60% of required HSCE. The MME assesses all 16 High School Science Standards. [MME-Assessable Science HSCE](#)

Social Studies – 83% of United State History & Geography HSCE; 76% of World History & Geography HSCE; 52% of Civics HSCE; 45% of Economics HSCE are MME-assessable, representing 137 of 230 (60%) Social Studies HSCE. The MME assesses 45 of 50 (90%) Michigan High School Social Studies Standards. The High School Social Studies Curriculum-Assessment Alignment Documents available October 2009, provide detailed information about the scope of the expectations and assessment classification.

[MME-Assessable Social Studies HSCE](#)